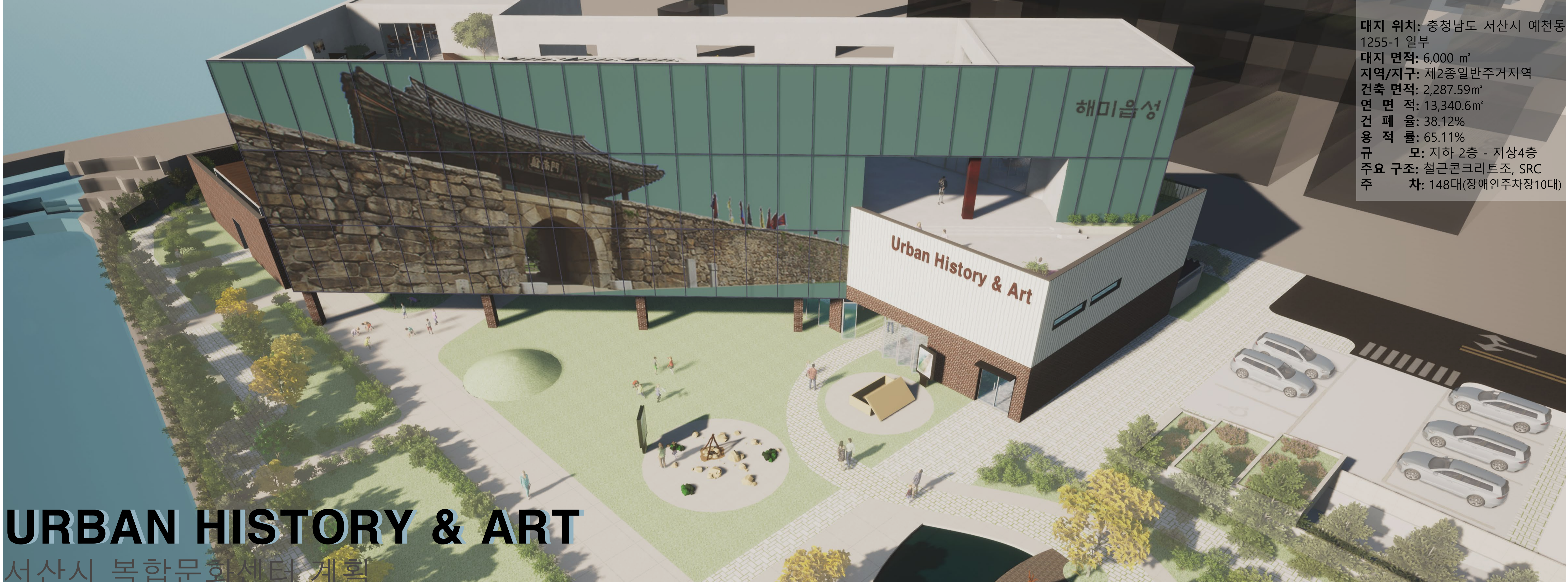


SYNOPSIS

대지 위치: 충청남도 서산시 예천동
 1255-1 일부
 대지 면적: 6,000 m²
 지역/지구: 제2종일반주거지역
 건축 면적: 2,287.59m²
 연 면 적: 13,340.6m²
 건 폐 율: 38.12%
 용 적 륜: 65.11%
 규 모: 지하 2층 - 지상 4층
 주요 구조: 철근콘크리트조, SRC
 주 차: 148대(장애인주차장10대)



URBAN HISTORY & ART
 서산시 복합문화센터 계획

PROLOGUE
 Small and medium-sized cities often suffer from poverty in cultural life. One of them is Seosan City. Seosan City does not have a museum, there are places where art galleries are lacking, and there is a lack of exhibition space for people who do art. Seosan City needs a place where you can enjoy both history and art. This project was carried out thinking that there is a need for a space where you can learn and relax, such as a workspace and exhibition space for new artists, and a space where children can experience and learn.

